



FAQ's – Sprucelawn Apartments for Seniors Addition

Estimated occupancy is October/November 2023.

What type of units are available for rent?

- 8 – one-bedroom units are designated for applications from the Region of Waterloo's Community Housing waiting list. To apply for one of these units, an Application for Community Housing must be submitted to a Region of Waterloo Access Site. For more information call 519-575-4400. - \$472.00 (Code A)
- 4 – one-bedroom, 557 - 575 sq.ft., tub or roll-in shower - \$850.00 (Code B)
- 8 – one-bedroom, 575 sq.ft., tub or roll-in shower - \$970.00 (Code C)
- 2 – two-bedroom, 828 sq.ft., tub - \$1,359.00 (Code D)
- 6 – two-bedroom, 828 sq.ft., tub - \$1,409.00 (Code E)

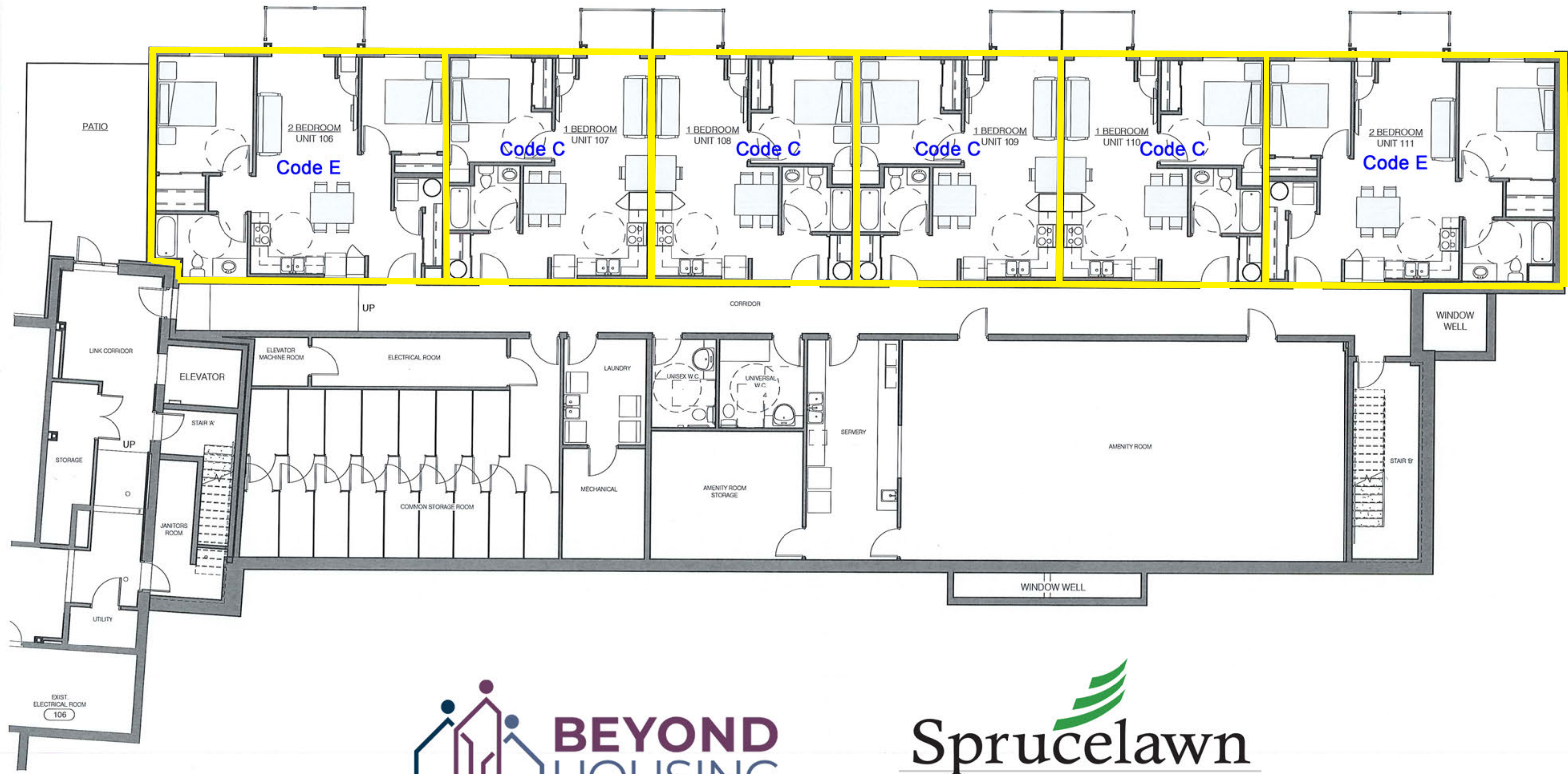
Miscellaneous:

- Seniors apartment building – age 55+
- Non-smoking building
- Pets allowed (one dog or cat - some restrictions)
- Shared laundry room on lower floor. (coin operated)
- In-unit hookups for *tenant supplied* stackable laundry units in two-bedroom suites
- Fridge and stove included in all suites. Dishwashers are provided in two-bedroom suites. Microwaves are not provided.
- Parking at \$25.00/month. (Limited availability)
- Cage-style storage lockers in lower level at \$15.00/month (Limited availability)
- 4 one-bedroom units are barrier-free with roll-in showers, accessible appliances.
- Tenants are responsible for their electricity costs.
- Heat and air-conditioning are electrical heat-pump.

Who can apply?

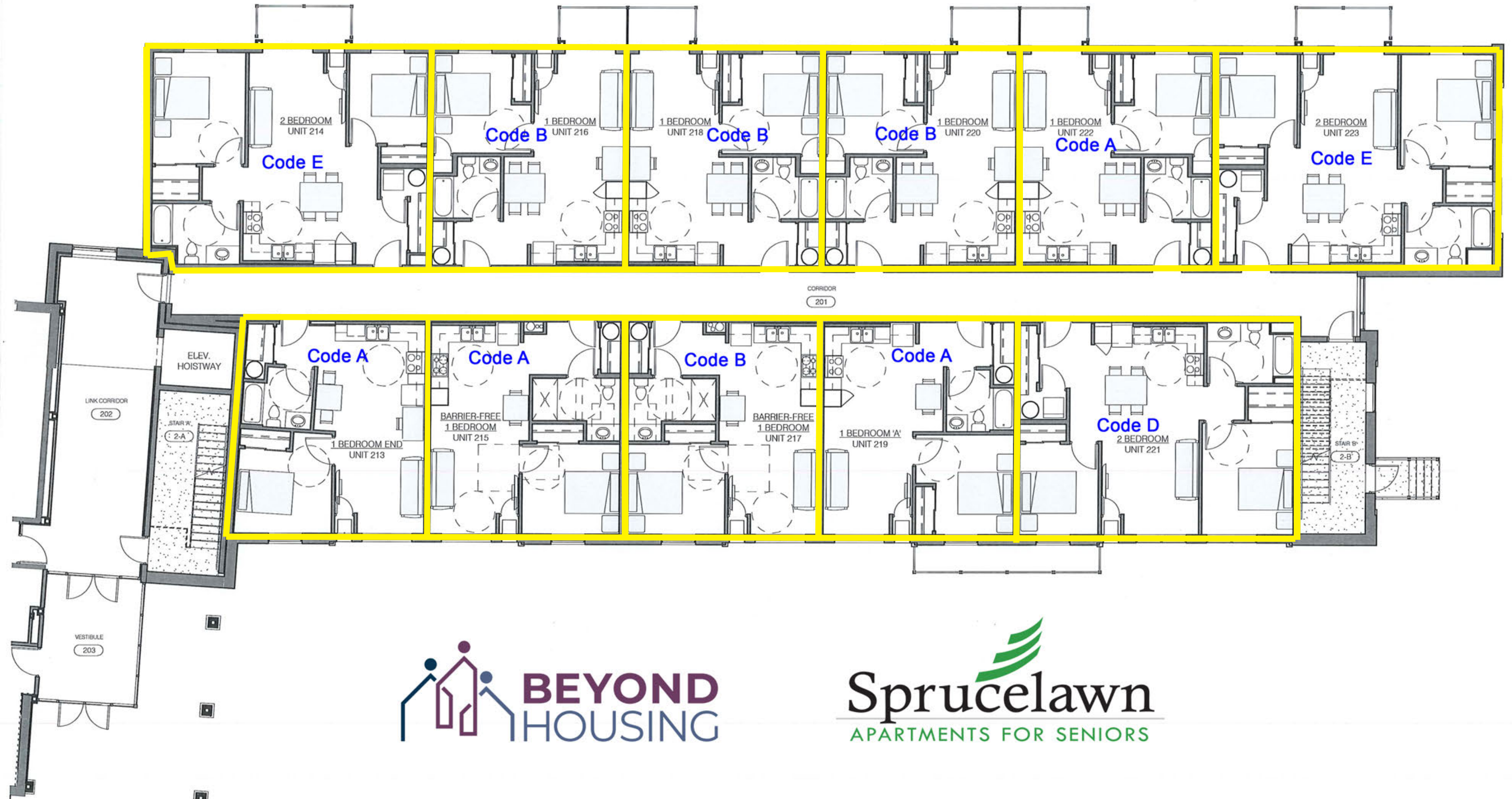
- Tenants must meet the Region of Waterloo's income limits for affordable housing. Note that these are the 2023 maximum incomes. They do not guarantee being accepted for an apartment.

Unit Type	Maximum Household Income
One Bedroom	\$59,760
Two Bedroom	\$70,512



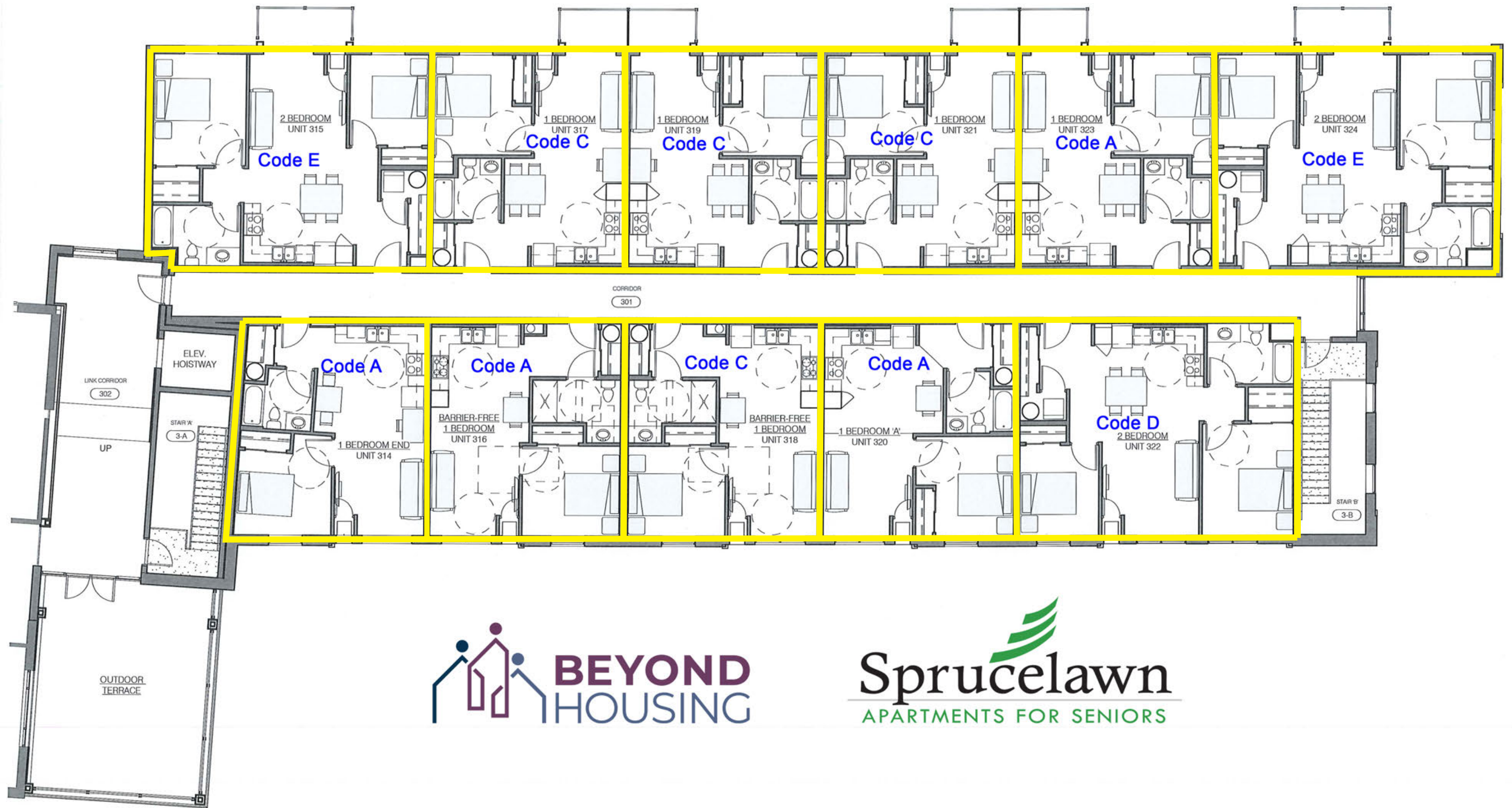
Lower level plan





Ground floor plan





Second floor plan

